



# MV TETHYS SUPPORTER TECHNICAL SPECIFICATIONS

The MV Tethys Supporter is a 36-metre support vessel with multiple capabilities for at-sea operations. With a reliable track record dating back to its time in the Swedish Coast Guard as a pollution control vessel, ample workspace on its back deck. The vessel is suitable for any number of offshore support functions.



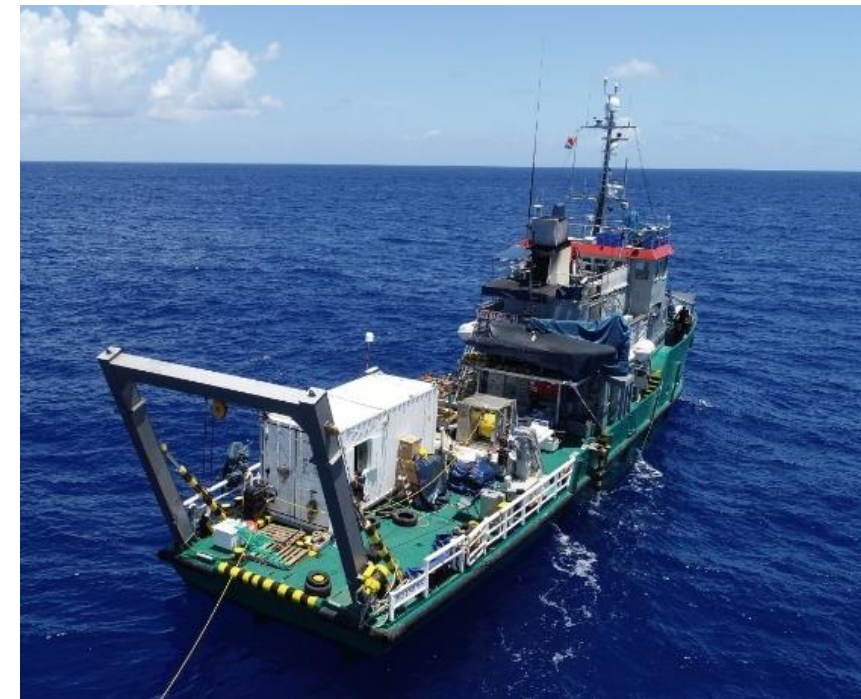
# MV Tethys Supporter Specifications

## Vessel Details

Dimensions (Length/Beam/Draft): 36m/8.5m/2.8m  
Molded draft: 4.2m  
Air Draft: 19 m  
Tonnage: 290 GT / 87 NT  
Displacement: 346 tons

Hull Construction: Steel, Aluminum superstructure  
Built: 1978 by: Lunde Skipsverft for Swedish coast guard. Used by Swedish coast guard Up to 2010 Renovated 2011 for Hosvik shipping in Norway Modified 2013 for work in tropical weather.

Inspections/Certifications: Fully compliant with flag state regulations/ requirements Member of International P&I club



## Propulsion & Power

Main Engines (2): B&W Alpha 406 - 26VO,  
1320 Hp @ 413 RPM  
B&W  
Alpha variable pitch propellers  
Gears (2): Ulstein 24 T - 1000 mm - 200 HP  
Propellers (2): 205 KW (216 KVA) Stamford MHC  
Bow Thruster: 434E generator driven by Volvo  
Generator 1: TAMD 120 AHC  
180 KW (172 KVA) AVK generator  
Driven by Scania D 11 MO1 NV  
Generator 2:



# MV Tethys Supporter Specifications

## Speed, Economy & Capacity

Cruising Speed:	8NM
Maximum Speed:	10NM
Diesel Capacity:	100,000L
Consumption at 8NM: (Peak speed/consumption ratio)	2,400L per day
Consumption at 4-5NM:	1,800L per day
Consumption on Genset only:	600L per day
Fresh water:	23 m3 + 2 x desalination plants 120/liter/hour
Grey water:	5 m3
Ballast:	12.2 m3 in bow, 14.6 m3 aft
Cooling water tank for use In ice conditions:	8.8 m3
Used oil tank:	4.3 m3
Foam tank:	1.55 m3

## Deck Equipment

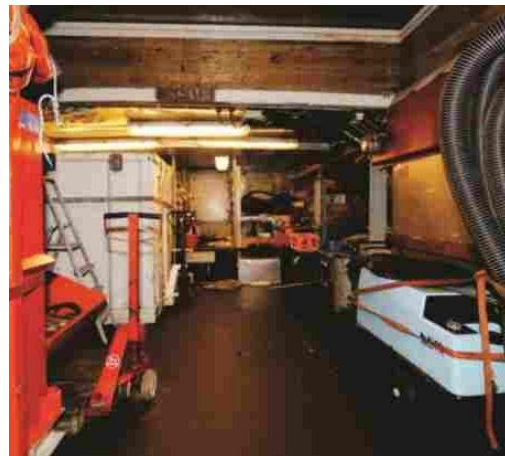
Deck space aft:	126m2 (about 15.96 x 7.9 meters gross)
Cargo hatch, hydraulic:	Free opening L= 4m, B=3m, 84m
Cargo hold:	49 m2 floor space. Max L=9 m
Hiab sea-crane 200:	9.400 kg@ 2 meters outreach with wire winch and radio remote control. Crane is man-riding
Hiab Sea-crane 180:	9.000 kg@ 2 meters outreach with wire winch and radio remote control. Crane is man-riding
Stern-roller:	3 x 0.3 m stern-roller
Hydraulic capstan	
Container locks:	Fastening for 2 x 20' container on deck
Puller:	14 pc
Control room/Dry Lab:	On main deck facing aft for 2 persons

### Winch on A-Frame

Winch Type:	Hydraulic Winch
Capacity:	4.5 TONS
Cable length:	50 Meters
Winch Speed:	30 meters/minute

### Winch on Deck

Winch Type:	Electro-mechanical Winch
Capacity:	5.5 TONS
Cable length:	150 Meters
Winch Speed:	10 meters/minute with variable speed control



# MV Tethys Supporter Specifications

## Navigation & Communications

Radar 1: Furuno FR 2115 ARPA 21' display  
Radar 2: Furuno FR 1505 ARPA 15' display  
Autopilot 1: Simrad AP70  
Autopilot 2: Simrad AP70MK2  
Gyro: Robertson RGC 50 gyro compass  
GPS compass: Furuno GPS compass with Furuno RD-30 repeater  
Magnetic compass 1: Plath 100 mm magnetic  
Magnetic compass 2: Bergen Nautic 150mm  
Echo-sounder: Furuno FCV-620 echo-sounder  
Navtex: Furuno NX-500 Navtex  
AIS: Simrad AI-80

Navigation computer (2): Trancas ECS Navisher 3000 with dual displays  
Signal controller: Kockums TI40

Satellite communication: 2x Inmarsat C Felcom 18 for GMDSS A3  
Satellite communication: Simrad Fleet 55 Sat Com  
Satellite communication: Fleet broadband 150 -Email, Internet, Voice  
Internal communication: Ampildan Commander Intercom  
Motorola MCS 2000 internal radio: x5  
Radio communication: GMDSS A1 + A2+A3  
SSB radio x 2: SPERRY RE 2100 / SPERRY COMPACT  
VHF DCS TRANSCEIVER: x 6  
VHF portable radio: x 3  
Portable Sat phone: x 1s



# MV Tethys Supporter Specifications

## Health, Safety & Environment

Although less than 500 gross tons, the vessel/company follows ISM codes according to ships exceeding 500 tons. The vessel has an SMS (safety management system) manual detailing procedures for a variety of HSE regulations and best practices.

Safety and Security

- Life raft Viking 2 x 12 pax + 2 x 16 pax
- Life Jackets X 38
- Life rings X 5
- Man overboard X 1 smoke/light + 3 light
- EPIRB x 2 E SA SMARTFIND
- SART x 2 RESCUER and TRON
- Intercom and announcing systems
- Closed circuit TV (Decks/Eng room)
- CLS
- Rescue zone on port side

Fire monitor on top deck

CCTV camera

Norse searchlight

Fire alarm system

120m<sup>3</sup>/hour. Foam tank 1, 55m<sup>3</sup>

On aft deck

Remote controlled

Servoteknikk BMS-904 alarm central

## Tender Configurations

Mob boat

Security/work boat

Avon 5.4 meters with 1 x 65 HP Yamaha

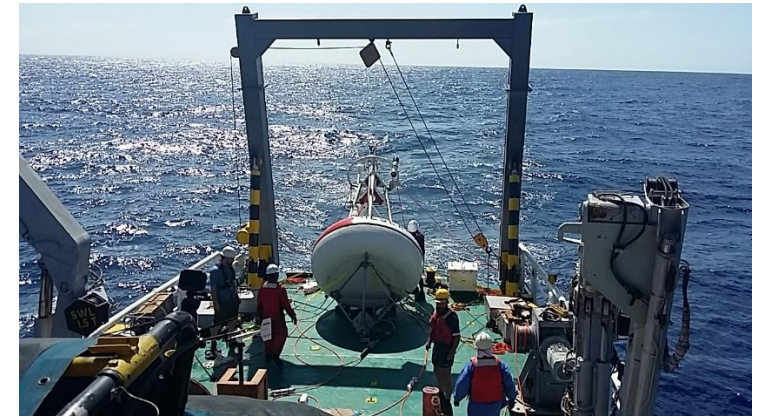
NPT 6 meters with 2x 55 HP Yamaha



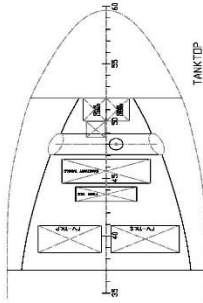
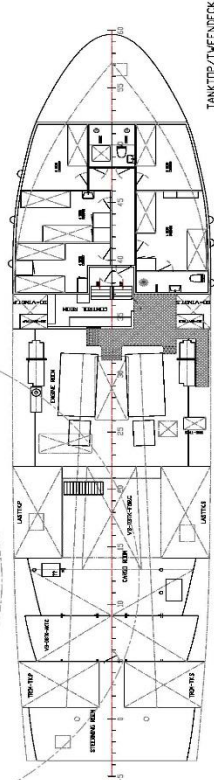
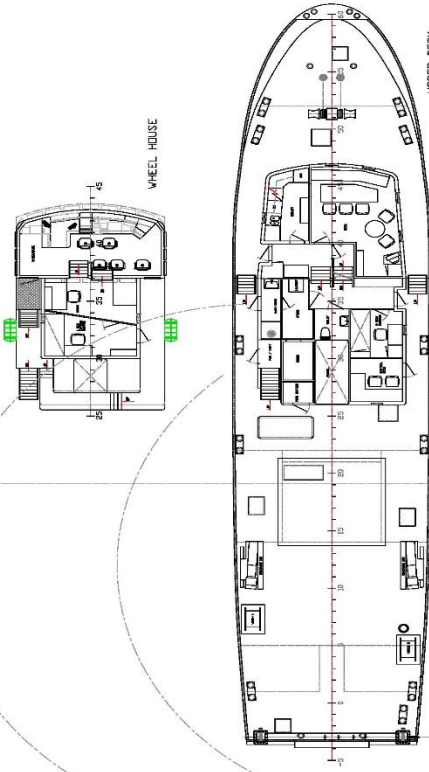
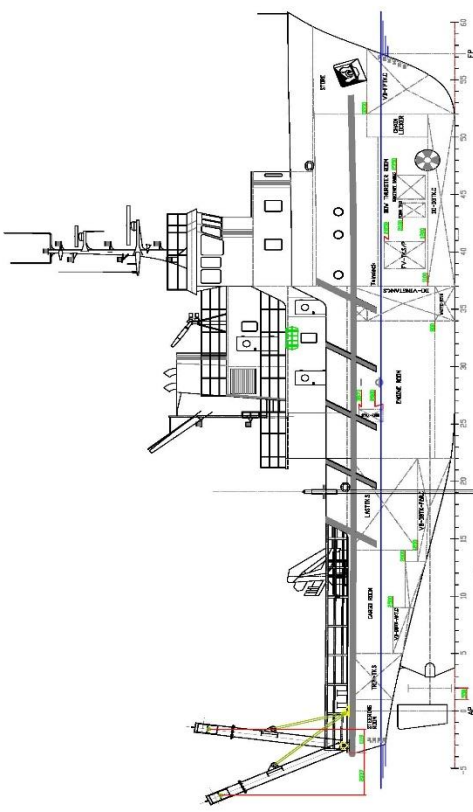
# MV Tethys Supporter Specifications

## Accommodation & Facilities

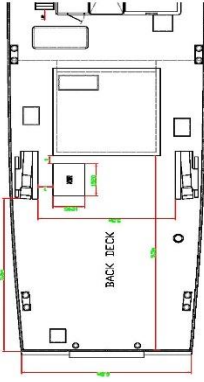
Scuba Diving Facilities	10 dive tanks 5 full sets of dive equipment 1 dive compressor
Crew	9 crew members
Accommodation	Comfortable fully AC accommodation for up to 11 additional personnel (plus separate crew quarters)
Galley Seating	10 Persons
Other facilities	Fully Air-conditioned dining room/saloon, TV, DVD, music system, washing machine and dryer



# MV Tethys Supporter General Arrangement



Main Characteristics :  
 LMA: 35.5 m  
 LPP: 31.5 m  
 Draft: 4.0 m  
 SWL: 4.2 m



2	21/11/2019	SIZED A-FRAME & REMOVED DAY	SL
1	12/01/2019	433 OBJECT RELOC- AIO DAY	SL
3	05/03/2019	ADD CONTROL ROOM, LIFTED FIRE STATION, RELOCED WINDS	SL
4	27/08/2020	REP	SL

TETHYS SUPPORT LTD 14th Floor, 14000, Main, 14th & Springdale Dallas, TX 75244 Office Tel: +1 214 142 8200 Fax: +1 214 142 8200 Info: <a href="http://www.oceanodyssey.com">www.oceanodyssey.com</a>	

<b>S7L2785 TETHYS SUPPORTER</b> Ex_Havill Supporter	
<b>General Arrangement</b>	
Drawing Title:	Drawn by: S&B Loomis
Project Manager:	Date: 21/11/2019
Approved by:	Number: 001
Amr Wasmang	...

This drawing cannot be copied, modified or distributed without prior consent from Tethys Supporter Ltd. All information contained in this drawing must be held in the strictest confidence.



# MV Tethys Supporter Photo Gallery

